



COMPANY PRESENTATION

The company is poised to realise the full potential of its Victorian, Tasmanian and Queensland projects through imminent bulk-sampling and targeted exploration programmes by:

- ✓ Pursuing precious metal discoveries in tier-1 mineral belts in Victoria and Tasmania
- ✓ Assessing alternate uses for coal including coal to liquid technologies in Queensland

June 2026

CAUTIONARY STATEMENTS

This presentation has been prepared by Pacific Resources Limited "PXR". This document contains background information about PXR current at the date of this presentation. The presentation is in summary form and does not purport to be all inclusive or complete. Recipients should conduct their own investigations and perform their own analysis forward-looking satisfy themselves as to the accuracy and completeness of the information, statements and opinions contained in this presentation. This presentation is for information purposes only. Neither this presentation nor the information contained in it constitutes an offer, invitation, solicitation or recommendation in relation to the purchase or sales of shares in any jurisdiction.

This presentation does not constitute investment advice and has been prepared without forward-looking the recipient's investment objectives, financial circumstances or forward-looking and the opinions and recommendations in this presentation are not intended to represent recommendations of forward-looking. Recipients should seek professional advice when deciding if an investment is appropriate. All securities involve risks which include (among others) the risk of adverse or unanticipated market, financial or political developments. To the fullest extent permitted by law, PXR, its officers, employees, agents and advisors do not make any representation or warranty, express or implied, as to the currency, accuracy, reliability or completeness of any information, statements, opinions, estimates, forecasts or other representations contained in this presentation. No responsibility for any errors or omissions from this presentation arising out of negligence or otherwise are accepted.

This presentation may include forward-looking statements. Forward-looking statements are only predictions and are subject to risks, uncertainties and assumptions which are outside the control of PXR. Actual values, results or events may be materially different to those expressed or implied in this presentation. Given these uncertainties, recipients are cautioned not to place reliance on forward looking statements. Any forward-looking statements in this presentation speak only at the date of issue of this presentation. Subject to any continuing obligations under applicable law, PXR does not undertake any obligation to update or revise any information or any of the forward-looking statements in this presentation or any changes in events, conditions, or circumstances on which any such forward looking statement is based.

COMPETENT PERSON STATEMENTS

Tasmanian and Eastern Victorian Goldfields Projects

The information in this presentation that relates to Exploration Results for the Tasmanian and Eastern Victorian Goldfield Projects were compiled by Ian Neilson, who is a Member of the Australian Institute of Geosciences. Mr Neilson is a Director and Shareholder of PXR. Mr Neilson is providing geological support to the Company on several project areas. Mr. Neilson has sufficient experience which is relevant to the style of mineralisation and type of deposit under consideration and to the activity being undertaken to qualify as a Competent Person as defined in the 2012 Edition of the 'Australasian Code for Reporting of Exploration Results, Mineral Resources and Ore Reserves'. Mr Neilson consents to the inclusion in the announcement of the matters based on the information in the form and context in which it appears. The Company confirms that it is not aware of any new information or data that materially affects the information in the original reports, and that the form and context in which the Competent Person's findings are presented have not been materially modified from the original report.

Blackall Project

- I Rowan Johnson, Member of The Australasian Institute of Mining and Metallurgy, confirm that I am the Competent Person for the Competent Person Report from which the information relating to the Blackall Coal Project to be publicly released has been obtained and also confirm that:
- I have read and understood the requirements of the 2012 Edition of the Australasian Code for Reporting of Exploration Results, Mineral Resources and Ore Reserves (JORC Code, 2012 Edition), the 2014 Edition of the Australian Guidelines for the Estimation and Classification of Coal Resources and the relevant sections of Chapter 5 and Guidance Note 31 from the ASX Listing Rules.
- I am a Competent Person as defined by the JORC Code 2012 Edition, having 39 years of experience that is relevant to the coal types, quality and potential mining method(s) of the deposit(s) described in the Report. In addition, I have 25 years of experience in the estimation, assessment and evaluation of Coal Resources, the activity for which I am accepting responsibility.
- I have reviewed the Report or Excerpt from the Report to which this Consent Statement applies.

In addition:

- I have disclosed to Pacific Resources Limited the full nature of the relationship between myself and the Company, including any issues that could be perceived by investors as a conflict of interest.
- I verify that the Report is based on and fairly and accurately reflects in the form and context in which it appears, the information in my supporting documentation relating to Coal Resources.
- I consent to the release of the Report and this Consent Statement by the Directors of Pacific Resources Limited.

The Company confirms that it is not aware of any new information or data that materially affects the information in the original reports, and that the form and context in which the Competent Person's findings are presented have not been materially modified from the original report.

CORPORATE OVERVIEW

CAPITALISATION DATA

Share Price	A\$	\$0.001
Issued Capital		3.52 billion
Market Capitalisation	A\$M	3.52
Cash	A\$	\$625,000

BOARD & MANAGEMENT

Board

Non-Executive Chairman	Anthony Chan
Non-Executive Directors	Daniel Chan, George Lam, Andrew Macintosh, Peter Tsang, Ian Neilson

Management

Chief Executive Officer	Andrew Fogg
Chief Operating Officer	Bruce Patrick
Company Secretary	Suzanne Yeates



DIVERSIFIED AUSTRALIAN PROJECT PORTFOLIO

COMPANY HIGHLIGHTS

Diversified ASX listed company
(ASX: PXR) with assets in key, high-demand commodities

Gold Project in Victoria, Australia. Completed negotiations to acquire 100% of company that owns granted Prospecting Licence - **Snowstorm**.

Gold, Silver, Copper Projects in
Victoria, Australia. Option to acquire granted Exploration Licences including **Haunted Stream, Dogwood and Snowstorm Extended**

Gold-Antimony-Base Metals Projects
in Tasmania, Australia. Granted Exploration Licences
Sulphide Creek & Mersey VMS

Blackall Thermal Coal Project in Queensland, Australia. JORC Inferred Coal Resource of 1.275 billion tonnes, including 55m tonnes of Indicated Resource.

Open to new opportunities in resources sector through acquisition, investment or joint ventures

EASTERN VICTORIAN GOLDFIELDS PROJECT

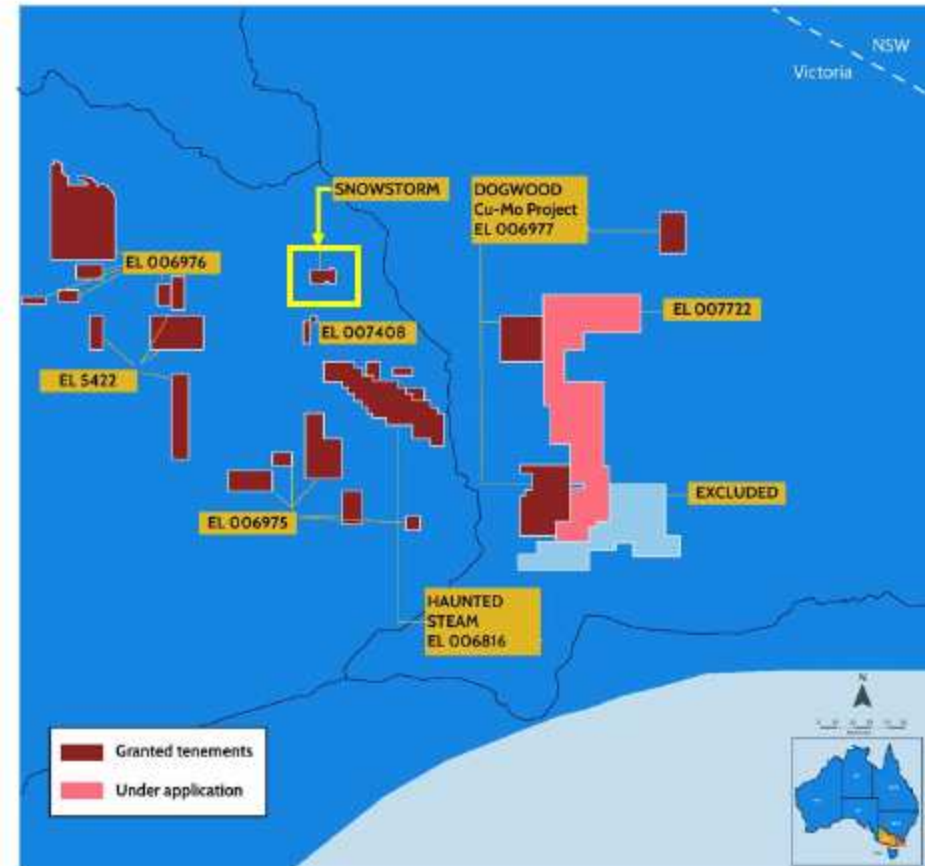
Snowstorm (PL007319)

- The company has completed negotiations to acquire 100% of the Issued Capital of Mines of Stirling Pty Ltd. On 1 June 2026, PXR acquired 50% of the company, with balance to be acquired on or before 17th July 2026.¹
- Mines of Stirling Pty Ltd (MOS) holds Prospecting Licence 7319 (PL007319) named **Snowstorm**.
- The tenure of **Snowstorm** expires on 28 April 2028.
- MOS has an Approved Work Plan to undertake an Underground Mining & Bulk Sampling programme to extract 3,000 tonnes of mineralised material.
- Extensive drilling includes **2,838m of Diamond Drillholes (DDH)** and **424m of Rotary Air Blast (RAB)**
- Assay drilling results with **59.2g/t Au** and Surface Sampling to **123g/t Au**
- Pacific Resources sees the potential upside to complete the Bulk Sampling programme and if successful, move forward to a Mining Lease.

Map showing granted exploration licences and exploration licence applications shown in yellow



1. ASX:PXR Release: "Snowstorm Gold Project Acquisition Update - Pacific Resources advances to 50% ownership" 2 June 2026



Snowstorm Project

History of Swifts Creek Gold Recovery

- Mining in the area shows **98,133 oz²** of gold had been extracted from 118,412 tonnes of ore. (**~25.77g/t Au**)
- Early mining methods were limited to a depth of 100 metres due to interactions with water, air supply and technology at the time. Historical records show **~14,000 oz Au** 1860 to 1880's – excludes King Cassilis. (map following)
- Snowstorm's geology is considered analogous with Fosterville Gold Mine in East Victoria. Fosterville reported in 2005, it has produced **~4.4million ounces** of gold with probable reserves of **1.68m ounces**. Currently they are 1,350 metres underground.³
- Modern mining techniques will allow significantly deeper access following ore leads.

2. Bibliographic reference: WILLMAN, C.E., MORAND, V.J., HENDRICKX, M.A., VANDENBERG, A.H.M., HAYDON, S.J., CARNEY, C., 1999. Omeo 1:100 000 map area geological report. Geological Survey of Victoria Report 1182.

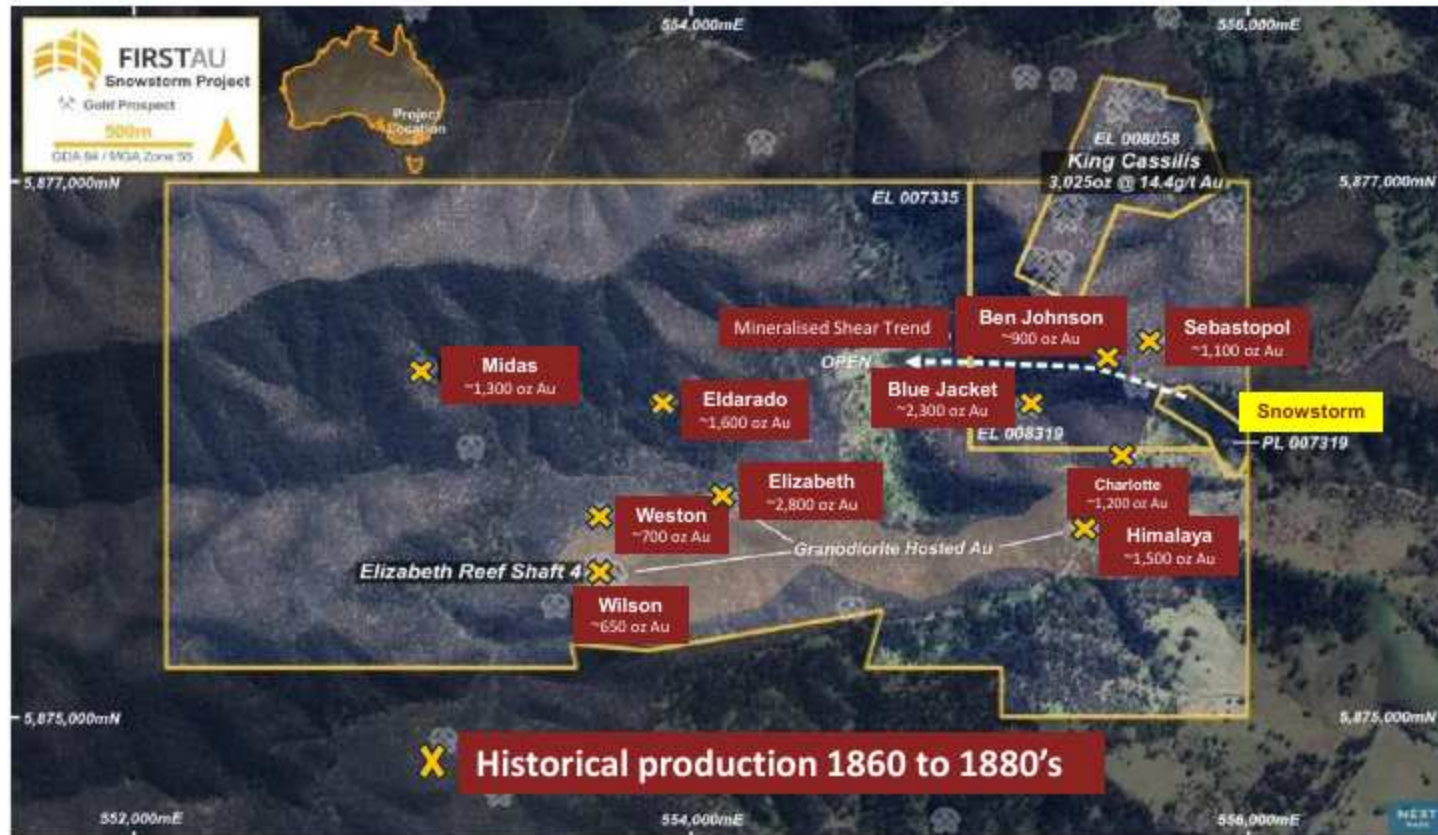
3. Agnico Eagle (Fosterville Mine) <https://www.agnicoeagle.com/English/operations-and-projects/global-operations-and-development-projects/fosterville/default.aspx> www.fgmcommunity.com.au

Table 13 OMEO gold production

Goldfield	Ore type	Production		Ore (t)
		(oz)	(kg)	
Swifts Creek	Primary	98 133	3 052.3	118 412
(Cassilis)	Alluvial	11 836	368.1	–
	Not specified	4 672	145.3	4 392
Subtotal		114 641	3 565.7	–
Omeo	Primary	4 504	140.1	3 791
	Alluvial	86 405	2 687.5	–
Subtotal		90 909	2 827.6	–
Haunted Stream	Primary	14 725	458	20 821
	Alluvial	8 250	256.6	–
	Not Specified	2 659	82.7	1315
Subtotal		25 634	797.3	–
Yahoo Creek	Primary	773	24	608
	Alluvial	†	†	–
Subtotal		773	24	–
Bingo Munjic Ck	Primary	11	0.3	10
New Rush Creek	Alluvial	†	†	–
Field not specified	Primary	438	13.62	554
	Unspecified	8 014	246.3	4 656
Subtotal		8 452	262.9	–
Total production		24 0120	7 477.8	–

Geological Survey Report 118²

Snowstorm Project (adjoins EL007335)



Source: Geological Survey of Victoria (GSV, Victorian Department of Mines)²

Snowstorm Project

Recent Exploration Results

The 2022 First AU drilling campaign returned the following results:

- FAU Drilling Highlights **>5g/t Au** recorded as high as **59.2g/t**.
- Face Sampling Highlights **>5g/t Au** recorded as high as **72.4g/t**.
- Extensive drilling includes **2,838m of Diamond Drillholes (DDH)** and **424m of Rotary Air Blast (RAB)**
- Approved Work Plan to undertake Underground Mining & Bulk Sampling Programme to extract 3,000 tonnes of mineralised material.
- If Bulk Sampling Programme is successful, consider moving to Mining Lease.

FAU Drilling Highlights >5g/t Au⁴

Hole ID	Depth From	Depth To	Sample ID	Au_ppm
SNDDHP2002	29.3	29.5	V004240	59.2
SNDDH001	64.6	64.8	V003036	49.3
SNDDH002	54.9	55.7	V003088	33.3
SNDDHP2010	14.8	15.1	V004682	23.9
SNDDHP2003	63.15	63.55	V004469	23.8
SNDDHP2009	8.8	9	V004865	23.2
SNDDHP2014	66.1	66.2	V004843	22.6
SNDDHP2012	56.7	57.2	V004793	16.15
SNDDH004	28.2	28.9	V003200	14.6
SNDDHP2004	62.3	62.7	V004597	12.35
SNDDHP2002	33.15	34	V004250	9.59
SNDDH002	53.3	53.8	V003085	9.2
SNDDHP2012	55.5	56	V004791	9.15
SNDDHP2012	78	78.5	V004821	9.08
SNDDHP2014	61.2	61.75	V004836	8.33
SNDDH002	54.3	54.9	V003087	8.19
SNDDHP2002	30.65	31	V004244	7.98
SNDDHP2007	10.8	11.3	V004667	7.64
SNDDHP2012	77.1	77.6	V004819	7.56
SNDDHP2003	62.65	63.15	V004468	7.17
SNDDH005	21.3	21.8	V003132	6.26
SNDDHP2006	33.8	34	V004681	5.91
SSD-002	52	52.5	V003230	5.86
SNDDH003	28	28.9	V003259	5.78
SNDDHP2001	39.9	40.15	V004084	5.52
SNDDH005	20.8	21.3	V003131	5.23
SNDDH005	19.3	19.8	V003128	5.2
SNDDHP2009	27.8	28.5	V004867	5.02

Face Sampling Highlights >5g/t Au

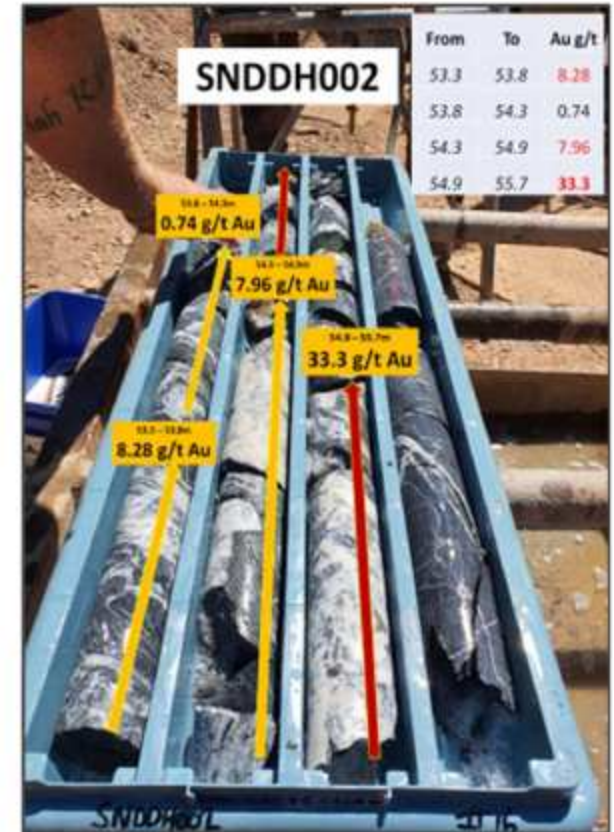
Sample ID	Easting	Northing	Au_ppm
VR0058	555728	5876160	72.4
VR0049	555726	5876138	66.3
VR0052	555728	5876160	56.1
VR0050	555728	5876160	48.2
VR0048	555726	5876138	45.8
VR0057	555728	5876160	43.5
VR0143	555896	5876039	38.9
VR0056	555728	5876160	32
VR0051	555728	5876160	30.8
VR0017	551475	5866554	21.2
VR0105	555900	5876044	19.2
VR0002	551435	5867340	17.6
VR0001	551436	5867370	16.6
VR0059	555969	5876004	14.3
VR0106	555886	5876048	14.1
VR0112	555930	5876053	11.9
VR0024	555892	5876011	10.7
VR0067	555963	5876031	10.3
VR0071	555963	5876031	9.37
VR0066	555963	5876031	9.28
VR0054	555776	5876234	8.69
VR0069	555963	5876031	8.23
VR0065	555963	5876031	7.38
VR0076	555963	5876031	7.22
VR0061	555963	5876031	6.95
VR0075	555963	5876031	6.86
VR0078	555963	5876031	6.82
VR0068	555963	5876031	6.21
VR0072	555963	5876031	6.03
VR0062	555963	5876031	5.81
VR0104	555917	5876039	5.69
VR0073	555963	5876031	5.6
VR0026	555892	5876011	5.29

4 ASX:FAU Release: "Successful Drilling Completed at Snowstorm Project, Victoria" 1 April 2022

Snowstorm Project



Long section looking Northeast showing the sulphide quartz reef geometries intersected by drilling. Coordinates in MGA94 Zone 55 against scale shown



High-grade core from diamond drill hole SNDDH002. (ASX: FAU Release "Snowstorm Drilling Intersects Mineralised Dyke Swarm", 10 June 2021)

Snowstorm Project

Bulk Sampling Proposal

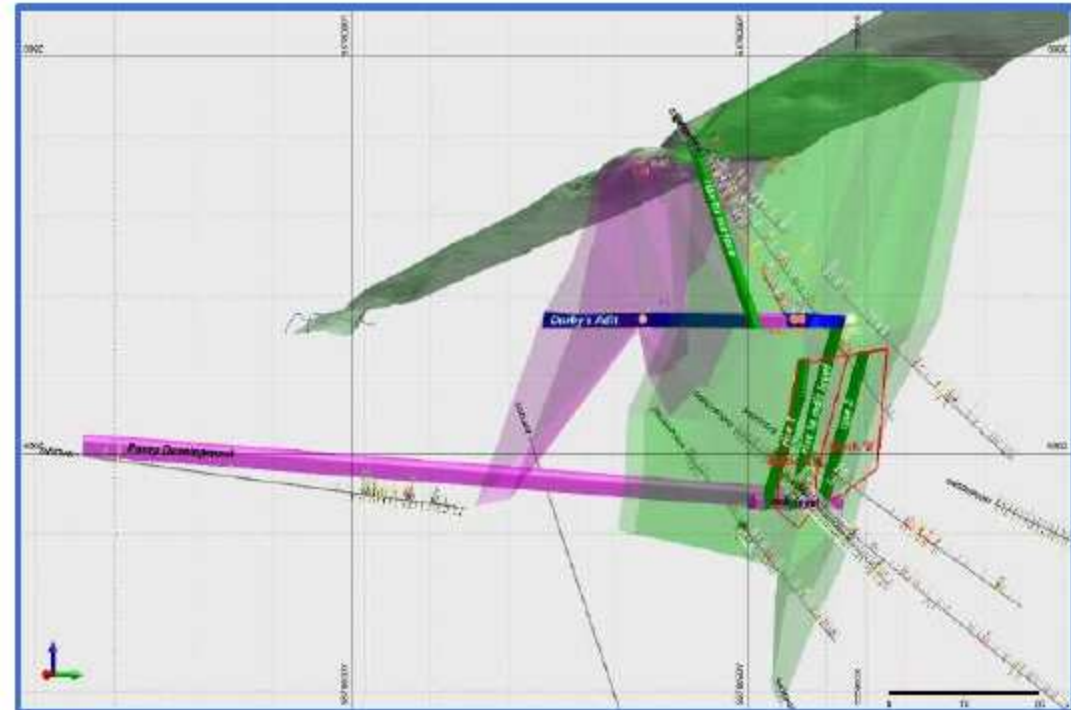
The bulk sampling of mineralised material is proposed to focus on development of UG workings that will access zones along:

- SNDDH002 intersection (2.5m @ **15g/t Au** including 0.8m @ **33.3g/t Au**)⁴
- SNDDHP2003 intersection (3.3m @ **5.8g/t Au** including 0.4m @ **23.8g/t Au**)⁴
- SNDDH2004 intersection (1.2m @ **5.82 g/t Au** including 0.4m @ **12.35g/t Au**)⁴

The bulk sampling should provide

- increased geological certainty
- sufficient bulk samples for mineral processing test work
- provide further access to positions under high-grade rock chip samples to the West and below.

The results of the bulk sampling will assist the company in its assessment of project parameters.



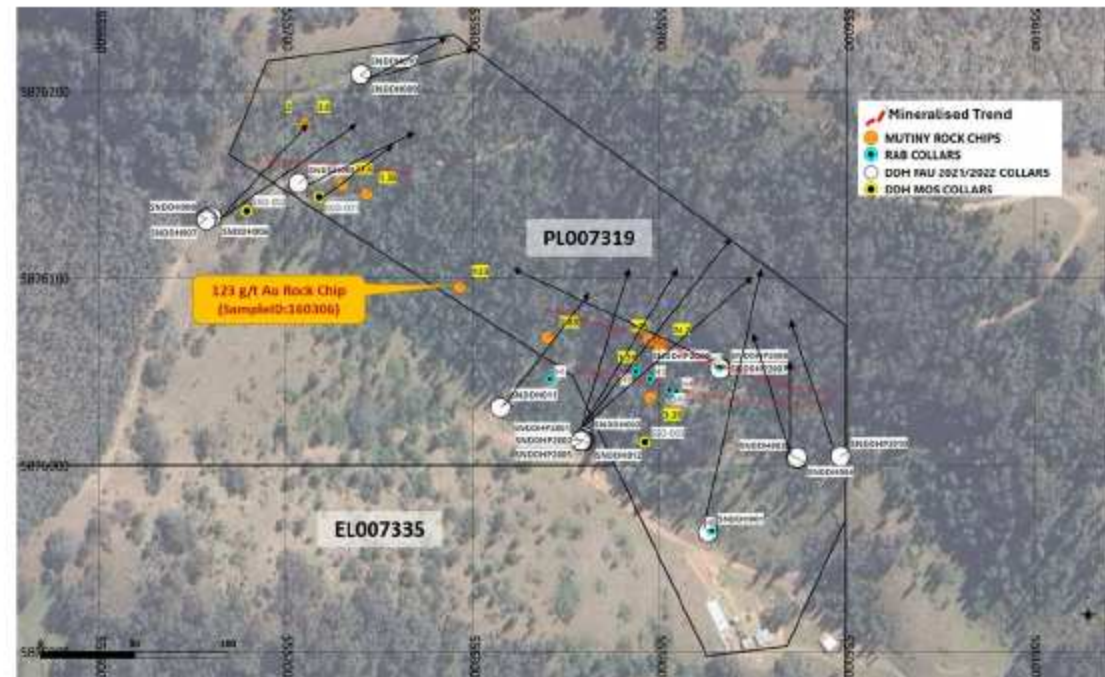
Longitudinal Section of Proposed Ramp Development

⁴ ASX:FAU Release: "Successful Drilling Completed at Snowstorm Project, Victoria" 1 April 2022

Snowstorm Project

Bulk Sampling Proposal

- The initial bulk sampling entry portal also provides an ideal 'entry' location into the system where further mineralised material is proposed to be accessed including:
 - Targeting additional surface mapped targets at depth that have not been drilled (**Sample ID 160306: 123g/t Au⁵**)
 - Access to Mineralised Corridor
 - Testing for 'repeating system' at depth beneath existing panels
 - Upside – due to steep terrain there is significant up-dip potential in the mineralised shear zone accessible outside the bulk sample target zone
- The PL provides significant upside opportunity for accessing multiple repeated lodes at depth and along strike to the Northwest including high-grade Silver, Gold and Antimony assays at surface
- The main gold bearing structures extend to depth and do not appear to be cut off at depth providing significant depth potential



Drilling locations in PL007319 extents (black). Coordinates in MGA94 Zone 55 against scale shown. Graticules squares are 100m line spacing.

5 ASX:FAU Release "First AU Accelerates Exploration at Victorian Gold Project" 30 October 2020

EASTERN VICTORIAN GOLDFIELDS PROJECT

Option to acquire a high-grade gold, base metals and critical minerals project in the Eastern Victoria⁶

- Pacific Resources has an option to acquire the **Eastern Victorian Goldfield Project** in the East Gippsland region of Victoria. In addition to gold prospectivity, the Project hosts a tenement package prospective for silver, copper, lead and zinc plus rare earth elements (REE) and antimony, tungsten and molybdenum.
- Subject to the exercise of the Option, and completion of the acquisition, the Project will become a strategic addition to Pacific Resources project portfolio and will complement its existing mineral resources assets.
- Exercise of the Option is subject to a number of conditions, including the completion of technical due diligence to its satisfaction. The Option is for a period of 19 months from date of entering the Option, 15 December 2025.
- Granted Licenses include:
 - **Haunted Stream** (EL006816)
 - **Dogwood** (EL006977)
 - **Dargo & Snowstorm Extended** (EL5422 & EL007335)
 - **Dargo High Plains** (EL006976)

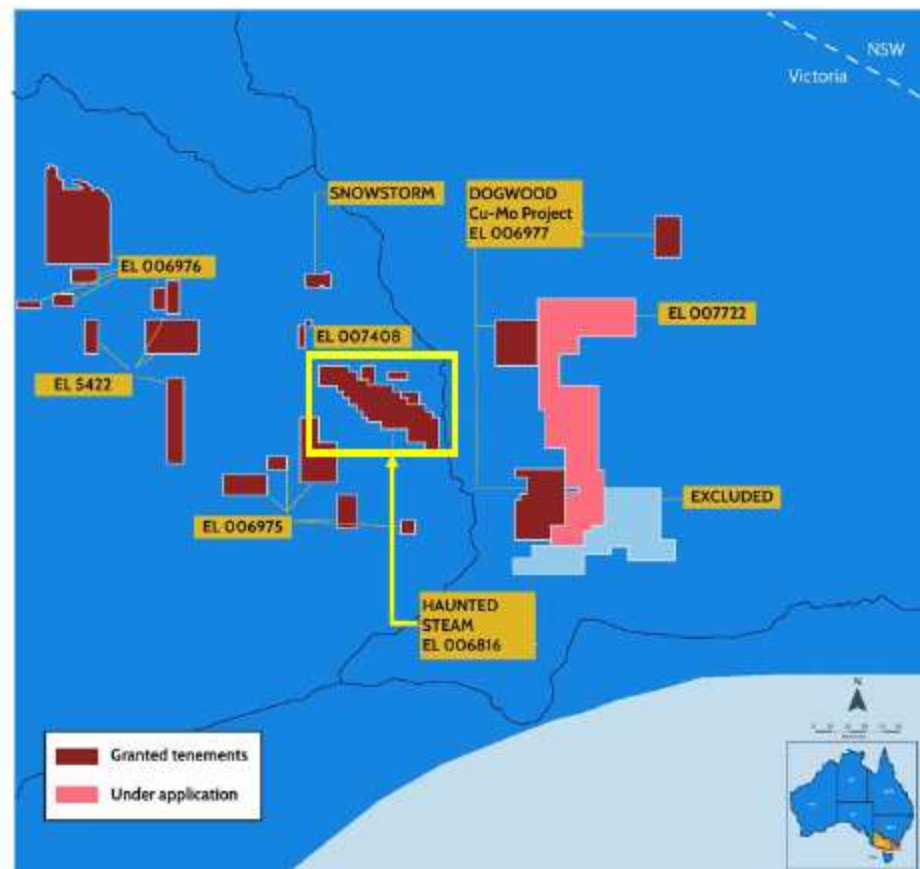
⁶ ASX:PXR announcements; "AUH Enters Binding HOA to Acquire Gold/Antimony and Base Metals project" 4 February 2025; "AUH acquires 100% Penwortham Exploration" 25 February 2025 and "Completes Acquisition Penwortham Exploration" 4 March 2025

EASTERN VICTORIAN GOLDFIELDS PROJECT

Haunted Stream (EL006816)

- **Haunted Stream** (EL006816)⁷. This is an ~8–8.5 km mineralised corridor of fold-hinge and shear-controlled quartz-sulphide shoots within Ordovician turbidites.
- The area has been tested to shallow depths (relative to Victorian analogues), and drilling has confirmed multi-metre, high-grade gold with bonanza spikes.
- These gold shoots remain open down-plunge beneath shallow historic workings, providing potential for exploration upside.
- This target would represent a priority exploration focus (subject to exercising the Option and completing the acquisition).

Map showing granted ELs and ELAs, with Haunted Stream licence shown in yellow box →

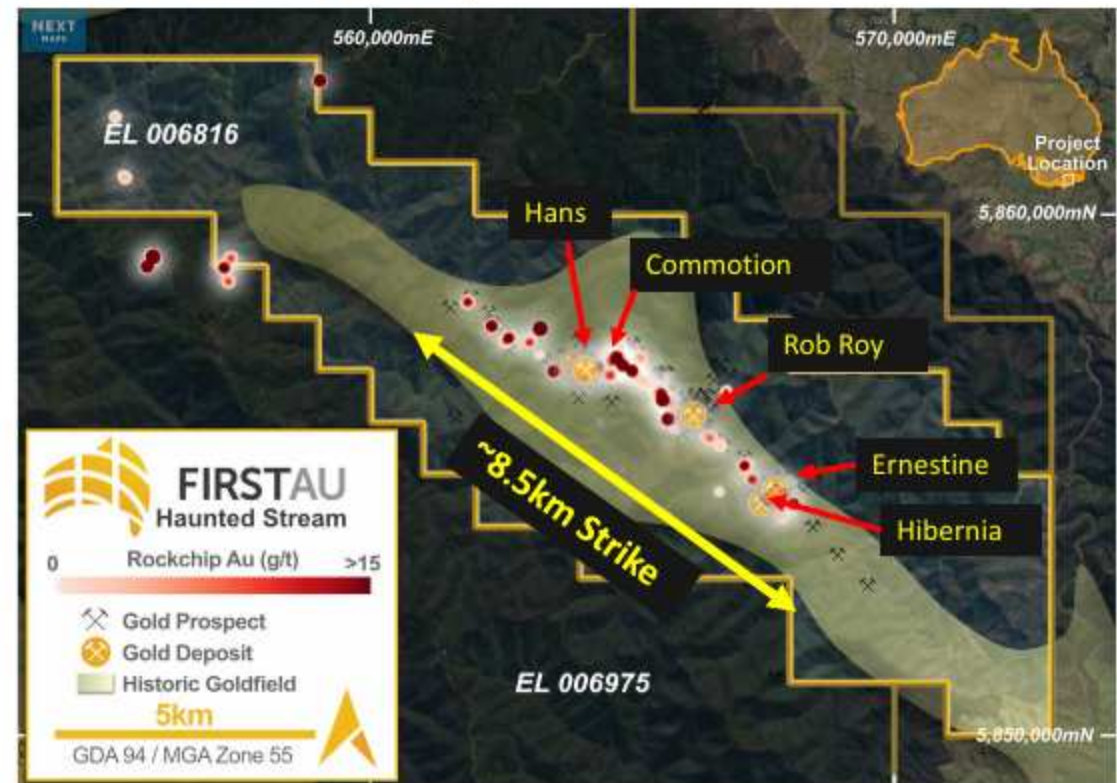


⁷ ASX:FAU Release "Haunted Stream, Victoria Delivers Further Outstanding Drilling Results" 31 August 2023

EASTERN VICTORIAN GOLDFIELDS PROJECT

Haunted Stream⁷ - Orogenic Gold Shoots (potential for near-term ounces)

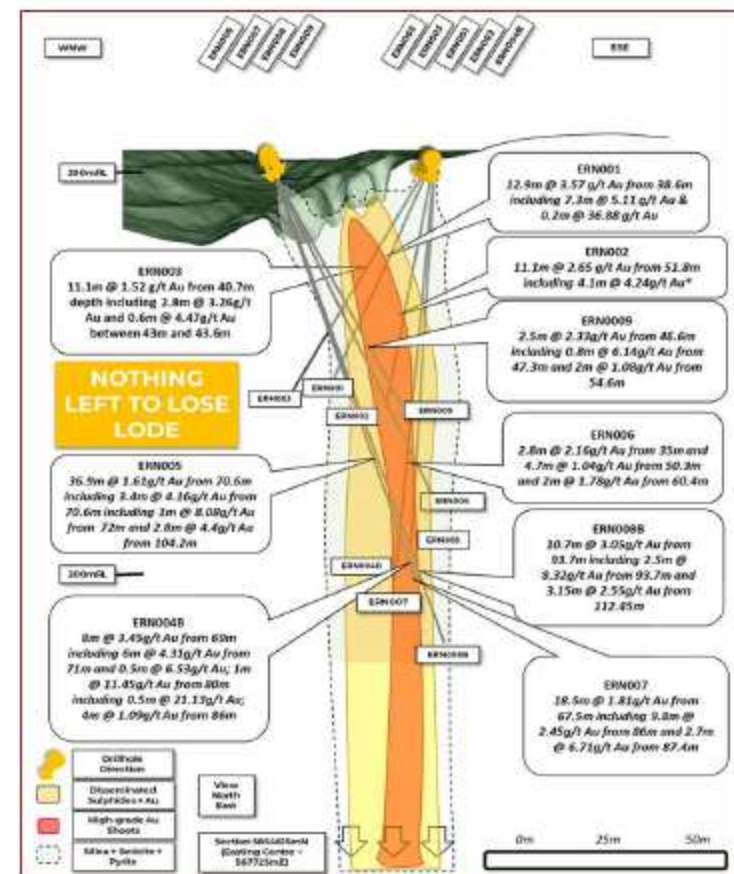
- **System & footprint.** An >8–8.5 km mineralised corridor of fold-hinge and shear-controlled quartz-sulphide shoots within Ordovician turbidites; the field remains shallowly tested relative to Victorian analogues.
- **Prospects within project includes:**
 - Ernestine;
 - Hibernia;
 - Rob Roy;
 - Commotion and
 - Hans Lodes.



EASTERN VICTORIAN GOLDFIELDS PROJECT

Haunted Stream⁸ - Ernestine Prospect

- **Current evidence at Ernestine prospect:** Modern drilling confirms multi-metre, high-grade gold with bonanza spikes:
 - ERN001 - **0.2m @ 36.88g/t Au** within broader mineralisation
 - ERN004B - **1.0m @ 11.45g/t Au** incl. **0.5m @ 21.13g/t Au**
 - ERN007 - **2.7 m @ 6.71 g/t Au**
 - ERN008B - **10.7m @ 3.05g/t Au** incl. **2.5m @ 8.32g/t Au**
- **Upside vectors.** Shoots remain open down-plunge beneath shallow historic workings; structural model is predictive (hinge/thrust geometry, shale-sandstone contrasts).
- **Principal risks.** Targeting complex system; access and drill-site geometry around historic workings.
- **Near-term lever.** Down-plunge diamond step-outs beneath ERN sections to convert demonstrable grade continuity into early ounces.



⁸ Independent Technical Review Due Diligence Review Gold Projects for AUH, Ian E Neilson, MSc RP Geo, 4 September 2025

FAU drilling, 2023; identifying high-grade shoots within mineralised shear zones. MGA41 Zone 55.

EASTERN VICTORIAN GOLDFIELDS PROJECT

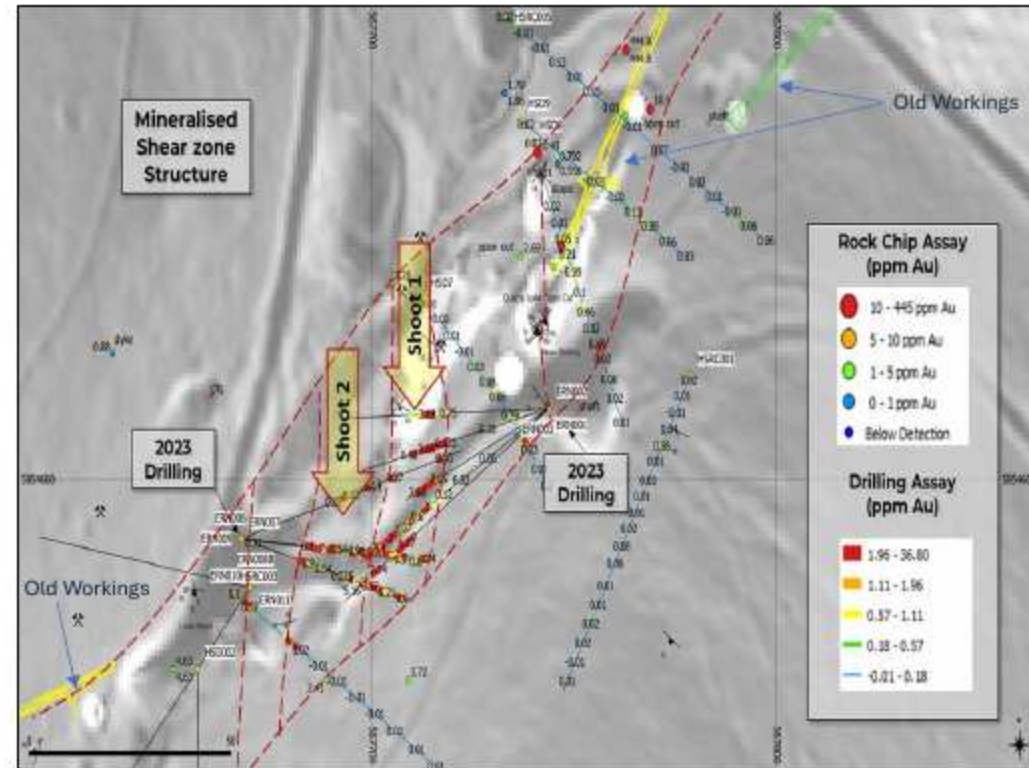
Haunted Stream: Ernestine Exploration Target ¹¹

Based on the technical assessment of this available data, the Company considers that the Ernestine lode has the potential to host an Exploration Target of 40,000 to 80,000 tonnes grading approximately **5-10g/t Au**, containing approximately **6,000 to 25,000 ounces of gold**.

The potential quantity and grade are conceptual in nature, as there has been insufficient exploration to estimate a Mineral Resource, and it is uncertain whether further exploration will result in the estimation of a Mineral Resource.

The Exploration Target is specifically based on;

- Results from drilling at the Ernestine Prospect by **FAU** in 2023⁹, and earlier diamond drilling and reverse circulation drilling (RC) by Mantle Mining Corporation (Mantle Mining)¹⁰;
- Geological interpretation of North-South striking quartz lodes hosted within Southwest-striking shear zones; and
- Assumptions regarding shoot dimensions, including a strike extent of approximately 50m, a vertical extent of approximately 150m and true widths of approximately 1-2m.



⁹ ASX:FAU Release "Haunted Stream, Victoria Delivers Further Outstanding Drilling Results" 31 August 2023

¹⁰ ASX:FAU Release "FAU Acquire Victorian Gold Exploration Project" 03 June 2020 and ASX:FAU Release "High Grade Rock Chips at Vic Gold Project Drilling Starting" 03 February 2021

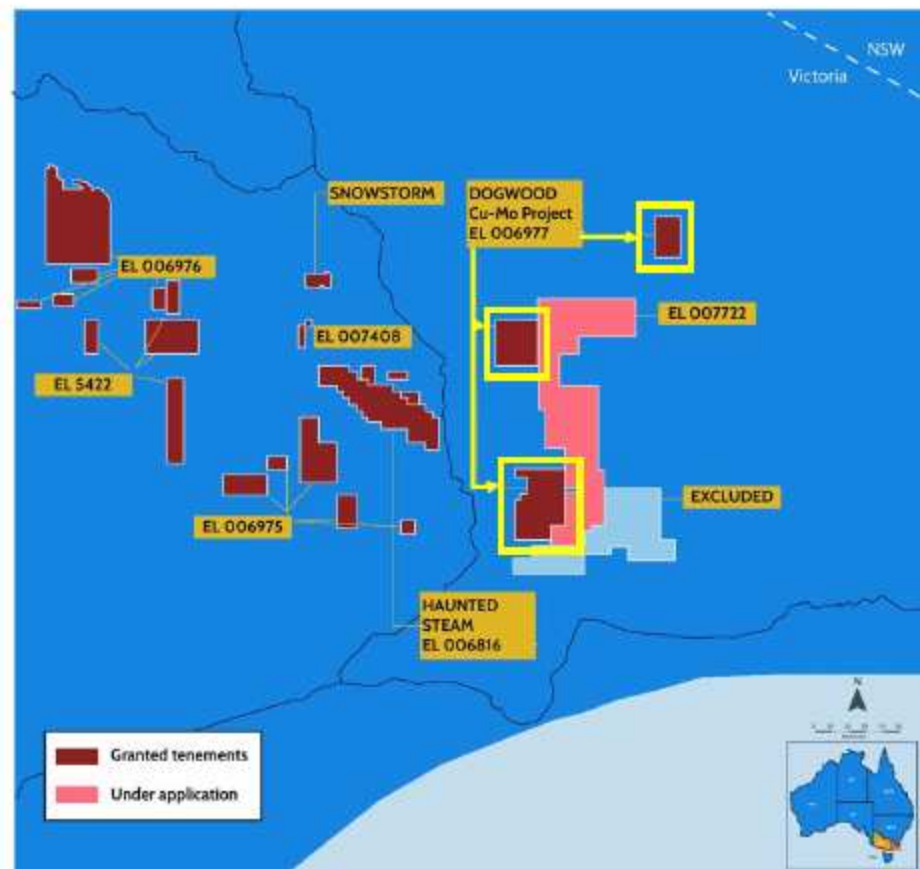
¹¹ ASX:PXR Release "Exploration Target Assessment in Eastern Victorian Goldfields Project" 24 March 2026

EASTERN VICTORIAN GOLDFIELDS PROJECT

Dogwood (EL006977)¹²

- The Dogwood tenement hosts a confirmed porphyry Cu–Au system with broad halos of disseminated copper and discrete gold-bearing veins.
- Geologically, the system is developed within a sill-like Early Devonian granodiorite body dipping gently NE, intruded into turbidites and cut by the Polygam Fault.
- Alteration zoning is diagnostic: from distal propylitic to proximal phyllic and incipient potassic domains, with magnetic susceptibility increasing with depth.
- This indicates drilling to date has intercepted the upper to mid-levels of a porphyry system, with fertile cores still to be located. The structural setting, at the intersection of basin faults and intrusive apophyses, suggests the possibility of multiple small porphyry centres distributed across the tenement.

Map showing granted ELs and ELAs, with Dogwood licence shown in yellow →

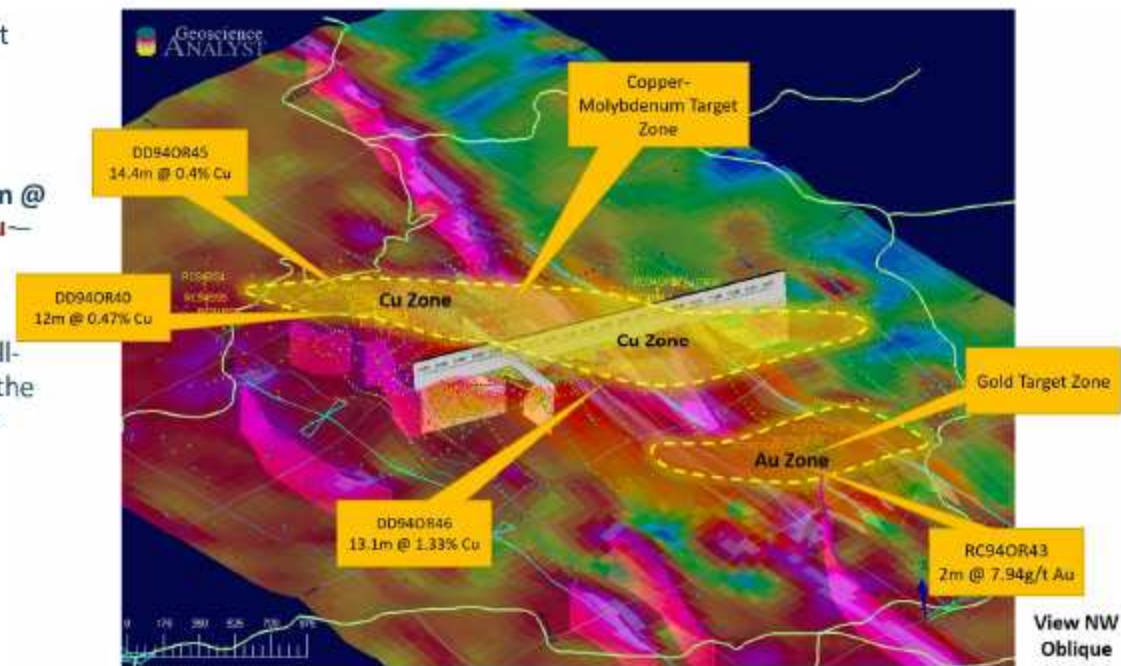


¹² ASX:FAU announcement "Further Dogwood Assays Highlight Copper Porphyry Potential" 8 December 2022

EASTERN VICTORIAN GOLDFIELDS PROJECT

Dogwood(EL006977)⁸

- **System and footprint.** Fertile Cu–Mo–Au porphyry in the Yeoval tract (continental arc) with 4 × 2 km alteration/mineralisation footprint; historic drillhole ended in ore and coincident IP + geochemistry anomalies remain untested.
- **Current evidence.** Historic and compiled intersections include; **24.4m @ 0.77% Cu (13.25 m @ 1.1% Cu), 30m @ 0.5% Cu and 2m @ ~8g/t Au**—consistent with upper–mid porphyry levels and Au-bearing vein overprints.
- **Vectoring signals.** Increasing magnetic susceptibility with depth, a sill-like granodiorite dipping ~15° NE with supergene enrichment along the Polygam Fault and elevated pXRF Cu–Mo in outcrop (Cu ~1.13%, Mo ~3,386 ppm) guide the hunt for potassic cores.
- **Principal risks.** System level is likely upper porphyry; grade heterogeneity until cores are found.
- **Near-term lever.** IP/chargeability-guided deeper step-outs beneath historic hits to locate potassic centres and higher-grade stockworks.



⁸ Independent Technical Review Due Diligence Review Gold Projects for AUH, Ian E Neilson, MSc RP Geo, 4 September 2025

EASTERN VICTORIAN GOLDFIELDS PROJECT

Additional Granted Exploration Licences:

Dargo Block (EL5422)

- Primary Commodity Target - Gold, Silver, Base Metals (Cu/Pb/Zn)

Dargo High Plains (EL006976)

- Primary Commodity Target - Gold, Copper, Base Metals, Antimony

Snowstorm-Extended (EL007335)

- Primary Commodity Target - Gold, Copper, Base Metals, Tungsten

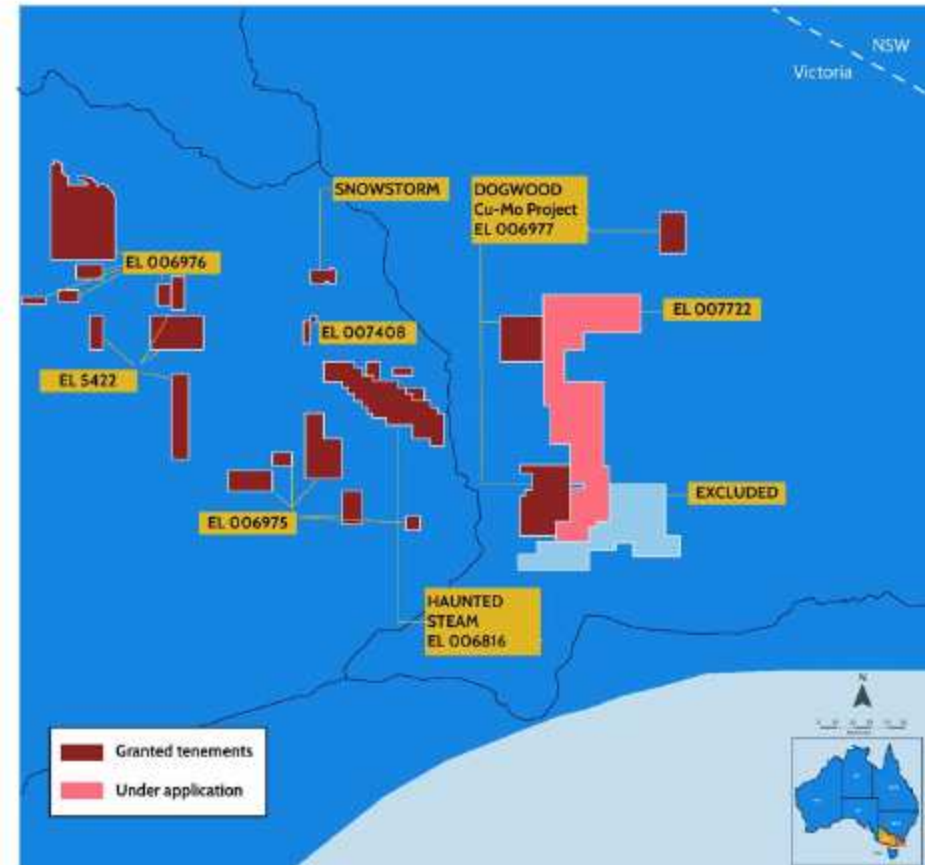
Additional Exploration Licence Applications:

Highland Chief (EL007408)

- Primary Commodity Target - Gold, Base metals (Cu/Pb/Zn) Cobalt

Tiger Creek (EL007722)

- Primary Commodity Target – Gold, Silver, Base Metals (Cu/Pb/Zn)



TASMANIAN EXPLORATION PROJECT PORTFOLIO

Pacific Resources acquired a portfolio of Gold-Antimony and Base Metals exploration assets⁶

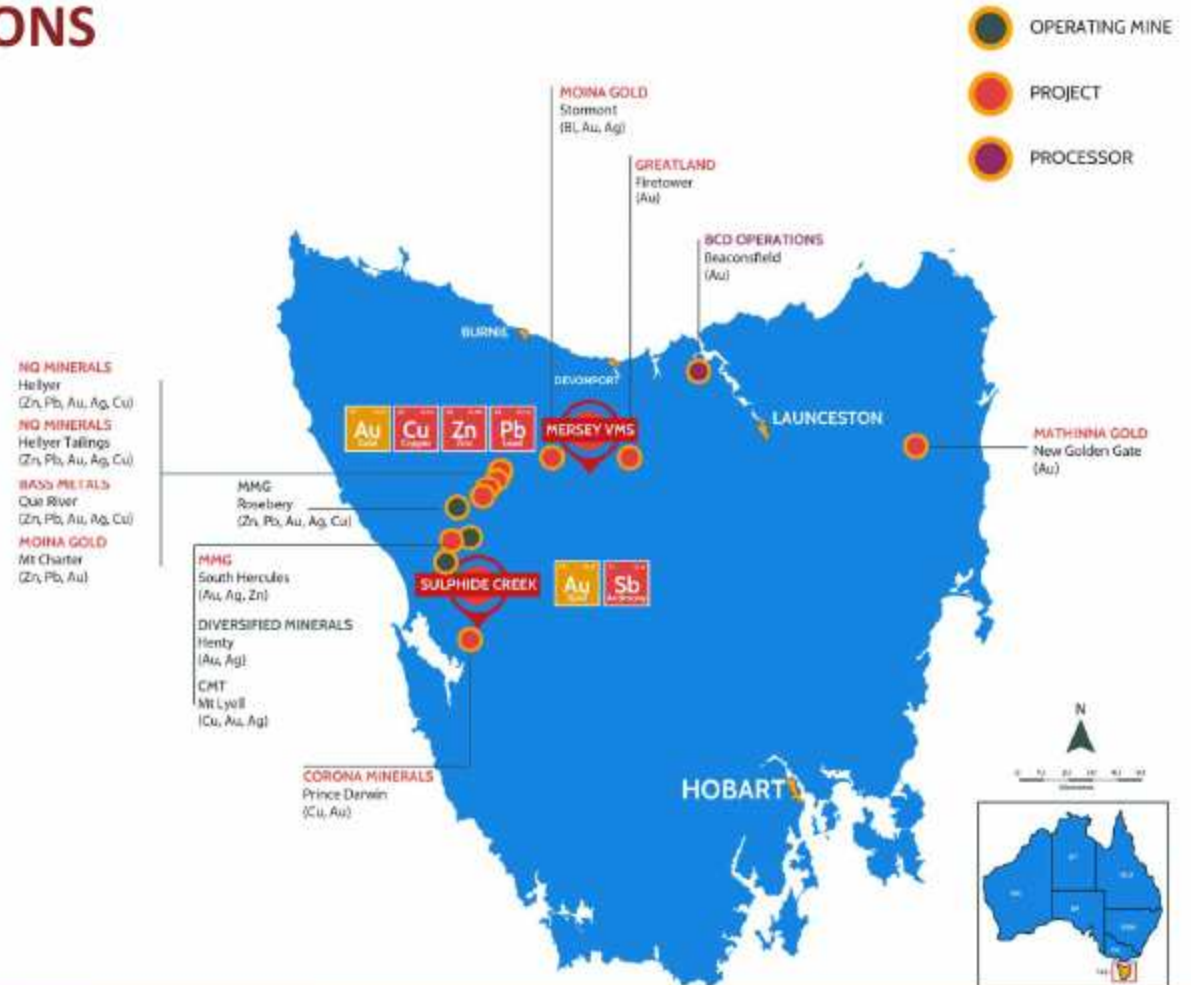
- **This project acquisition allows PXR to expand into high-demand commodities – gold, antimony and copper – in active, Tier-1 mineral belts**
 - Sulphide Creek Gold-Antimony Project; and
 - Mersey VMS Base Metals (including Copper and Gold) Project.
- Historical high-grade exploration results – opportunity to apply modern exploration techniques to deliver near-term value
- Targeted, value-accretive field work to commence – maiden drilling program planned within six months at Sulphide Creek
- Project (subject to exploration results and requisite approvals)
- Focused board and highly experienced technical team committed to advancing projects and delivering shareholder value
- **Highly supportive government jurisdiction for minerals exploration**
 - Tasmania's Critical Minerals Strategy fosters a sustainable industry by leveraging geology, infrastructure, clean energy, and responsible extraction for a secure, cleaner future;
 - Tasmanian government's Exploration Drilling Grant Initiative (EDGI) provides funding for exploration drilling;
 - A focus on developing production and processing capabilities within Tasmania to further add value

⁶ ASX:PXR announcements "AUH Enters Binding HOA to Acquire Gold/Antimony and Base Metals project" 4 February 2025; "AUH acquires 100% Penwortham Exploration" 25 February 2025 and "Completes Acquisition Penwortham Exploration" 4 March 2025

TASMANIAN PROJECT LOCATIONS

Quality exploration assets in world-class exploration precinct in Tasmania

- High-grade **Sulphide Creek Gold-Antimony Project** in the Tier-1 Queenstown mining district;
- **Mersey VMS Base Metals Project** including Copper and Gold.
- Historical Mines and exploration in area date back to early 20th century - highlight prolonged prospectivity of region



SULPHIDE CREEK GOLD-ANTIMONY PROJECT ^{6,13}

- **Sulphide Creek Gold-Antimony Project (EL16/2022) is located in Tasmania's worldclass Queenstown mining district**
- Multiple gold targets along 6km of strike, tracking a major structure which has been under-explored to date
 - Historical workings contain ½ ounce Au grades
 - Antimony workings with notable 60-70% Sb high grades
- **New mineralisation model to explore and develop;**
 - with structural evidence of potential orogenic style gold mineralisation (e.g. Fosterville, Victorian goldfields) and
 - large mineralized system in adjacent tenure with Mt Lyell Cu-Au Deposit, showing fertility of area
 - PXR plans to drill high priority Coupon Au target
- Historic exploration modelling¹⁴ and work confirmed by PXR geologists suggest **potential for a large gold Au system at Sulphide Creek Project**
- Opportunity to develop **compelling model for high grade antimony targets** with modern exploration techniques, linked to gold system



⁶ ASX:PXR announcement "AUH Enters Binding HOA to Acquire Gold/Antimony and Base Metals project" 4 February 2025;

¹³ ASX:PXR announcement "Fieldwork Commences at Sulphide Creek Gold Antimony Project" 7 May 2025;

¹⁴ Shree Minerals Limited ASX announcement 16 Feb 2011

SULPHIDE CREEK PROJECT¹⁵

Located in prolific historical mining area of Western Tasmania

- Project is 5km south of Queenstown mining centre and Mount Lyell Mine - good access to road, power, water and workforce
- Granted tenure (EL16/2022) covering 224km² located predominantly within crown land or timber production zone - good land access

Key Target areas:

- Coupon (Au),
- Rinadeena (Sb),
- 24-28 Anomaly (Au),
- Davie (Au), and
- Davie PA (Au)



¹⁵ ASX:PXR announcement "AUH Enters Binding HOA to Acquire Gold/Antimony and Base Metals project" 4 February 2025

COUPON GOLD PROSPECT ^{15,16}

- Historic mine - reported at least six tunnels plus shafts and winzes were developed historically into gold-bearing limonitic zones. **Production records in 1913 indicate 32t of ore was extracted at recovered grade of 12 g/t Au.**
- The Company's review of historic data at the Coupon area also shows significant historic soil, rock chip and channel sampling has been completed. This data is currently being compiled, with the Company aiming to identify additional drill targets from this work.
- Historic drilling at Coupon returned several intersections > **1g/t Au**. The area also has a 20m to 50m wide halo of low-grade gold mineralisation (**0.3 to 0.6g/t Au**).
- Highlights drilling intersections include² –
 - **56m @ 0.6 g/t Au** from surface, including **12m @ 1.7 g/t Au** from 26m in LT89CCRC03 (Cyprus Gold);
 - **12m @ 1.2 g/t Au**, from 12m, including **2m @ 4.2 g/t Au** from 16m in LYN002 (Goldstream Mining);
 - **17.5m @ 0.82 g/t Au**, from 13m, including **2.5m @ 2.7 g/t Au** from 16m in LYN004 (Goldstream Mining)
- **No significant exploration testing of Coupon** since 1995 – assessed as significant exploration opportunity and priority target for PXR.
- New structural model identified as analogous to high grade gold mineralisation in the central Victorian Goldfields.
- Drill thus far has only hit the halo-related gold (i.e., **0.3 to 1.5 g/t Au**). PXR will now target potential for high grade shoots in upcoming drill program (i.e., **15 to 32 g/t Au**)



¹⁵ ASX:PXR announcement "AUH Enters Binding HOA to Acquire Gold/Antimony and Base Metals project" 4 February 2025
¹⁶ ASX:PXR announcement "Fieldwork Commences at Sulphide Creek Gold Antimony Project" 7 May 2025

RINADEENA ANTIMONY PROSPECT ¹⁵

- Only historic antimony occurrence recorded by Geological Survey of Tasmania that is accessible. Ore samples collected and stored by the Geological Survey of Tasmania.
- **Antimony price currently at historic highs** following China's recent export ban on some antimony products.
- **Antimony is on the critical mineral lists** of many countries including; Australia, the USA, Canada, Japan and the EU due to its defence and military applications.
- **Reported from workings^{16,17,18,19} (1906-1907) of very high grade** - ranging from **50 to 70% Sb** in stibnite (and **5 to 9 g/t Au**) in lode-hosted 6m width structure along slate and quartzite contact.
- Tasmanian Geological Survey reports²⁰ assays taken from Mines Inspector reported to contain up to **66.57% Sb and 1.05% Pb**.
- The Rinadeena Formation is **lithologically, structurally and stratigraphically equivalent to the host rocks of the million-ounce Beaconsfield deposit** in Victoria.
- Records suggest 41m horizontal adit, from a 4m vertical shaft (no production records available).
- Prospect has had no modern exploration – **discovery potential exists with modern exploration techniques.**



¹⁵ ASX:PXR ASX announcement "ADH Enters Binding HOA to Acquire Gold/Antimony and Base Metals project" 4 February 2025 ¹⁶ Wednesday 22nd August 1906, Zeehan and Dundas Herald; ¹⁷ Monday 7th January 1907, Zeehan and Dundas Herald; ¹⁸ Saturday 16 February 1907, Zeehan and Dundas Herald; ¹⁹ Thursday 28th February 1907, Zeehan and Dundas Herald ; ²⁰ Nye, P.B. Supplementary Report on Antimony Minerals in Tasmania, Geological Survey of Tasmania, 1941

MERSEY VMS PROJECT ¹⁵

- **Mersey Base Metals-Gold Project** (EL6/2021) covers an area of 200km² in the historical, world class mining area of NW Tasmania.
- **VMS mineralisation model similar to nearby Hellyer Mine** 16.9Mt @ **13.8% Zn** (NQ Minerals) and **Rosebery Mine** 54Mt @ **11.2% Zn** (MMG) deposits within the Mt Read Volcanics.
- **35km along strike from the Hellyer Mine area** - displays similar geological settings to both Hellyer and Rosebery districts.
- **Mineralisation Styles occur as:**
 - Shear hosted, steeply dipping stacked Zn-Pb-rich ore lenses
 - Distal Cu and Au ore zones adjacent Zn-Pb-rich ore lenses
- **Previous exploration identified VMS mineralisation** present, with much of the work completed in the 1970's and 1980's (including drilling).
- **New insights and understandings into VMS systems** and their controls have created **new opportunities for exploration in Tasmania.**
- **Multiple target areas;** Cathena, Lake Barrington/Staverton and Lea River Gold prospect.



¹⁵ ASX: PXR announcement "AUH Enters Binding HOA to Acquire Gold/Antimony and Base Metals project" 4 February 2025

QUEENSLAND PROJECT

Blackall Coal Project ²¹

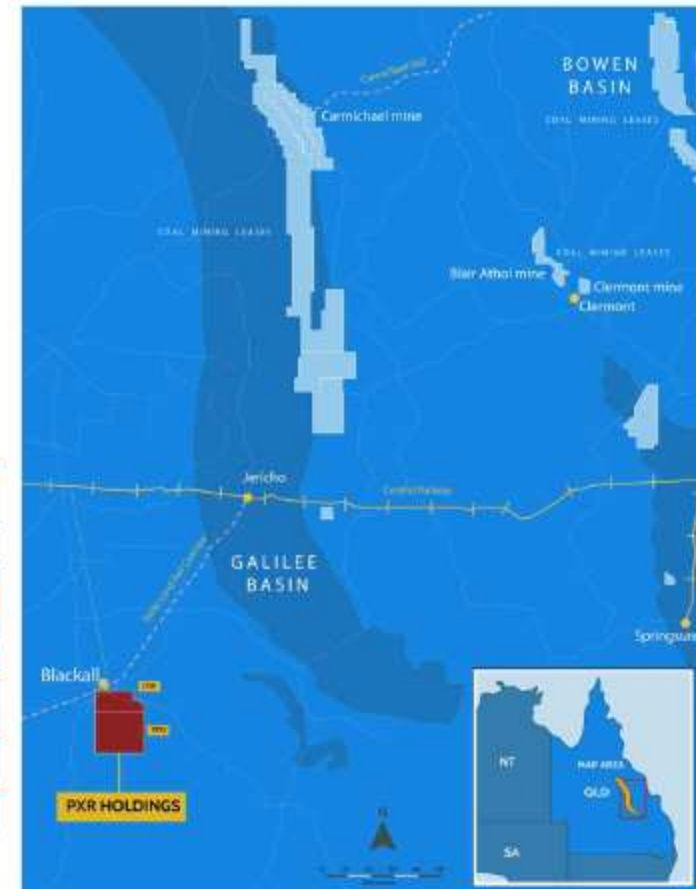
EPC 1993 & EPC 1719

- 1.275 billion tonnes of thermal coal which includes JORC Inferred Resource and 55m tonnes as an Indicated Resource.
- Over 800Mt of the resources is estimated at less than 50 metres depth.
- Continue to research alternate uses of the coal including coal to liquid technologies.

Total Coal Resources (Inclusive of Resources modified to produce Reserves) – 26 February 2024

Mining Method	Depth Interval (m)	Measured (A)			Indicated (B)			(A+B)	Inferred			
		Tonnes (Mt)	Quality		Tonnes (Mt)	Quality			Tonnes (Mt)	Tonnes (Mt)	Quality	
			CV (kcal/kg)	Ash (%)		CV (kcal/kg)	Ash (%)				CV (kcal/kg)	Ash (%)
DC	0-50	-	-	-	47.4	3590	22.8	47.4	761	3820	19.7	
DC	50-100	-	-	-	7.2	3920	18.5	7.2	416	3900	19.1	
DC	100-150	-	-	-	-	-	-	-	43	4270	15.3	
Total	-	-	-	-	54.7	3640	22.2	54.7	1220	3850	19.5	

21 ASX:PXR announcement "Coal Resource Upgrade for the Blackall Coal Project" 27 February 2024



NEXT STEPS

Eastern Victorian Goldfield Project “Snowstorm”

Additional testing of core and pulp samples
Update bulk sampling programme costs
Initiate Bulk sampling programme

Eastern Victorian Goldfield Project “Haunted Stream”

Down-plunge drilling on the ERN001–ERN0088 lines to 250–350 m depth with 50 100 m step-outs; orient core for structural control.
Infill + along-strike at the best shoots (ERN001/2/4b/7/88) to establish continuity and grade shells
Resource prep: start building a preliminary 3D model (validated assays + structure) to frame an Exploration Target.

Eastern Victorian Goldfield Project “Dogwood”

Geophysics to vector: 3D mag inversion + IP/chargeability panels across DGWDDH001–004 panels; rank potassic domain targets.
Deeper DD step-outs: 2–3 holes beneath DGWDDH003–004 targeting chargeability highs and structural intersections; orient core; tighten QA/QC.
Met tests on Cu–Au vein material vs disseminated halos (representative variability).

Sulphide Creek “Coupon Prospect”

Data compilation of historic production and exploration reports, geology, geochemistry and geophysics.
LIDAR (Light Detection and Ranging) survey to map historic workings and key structures over main Harvey Creek Fault system at Sulphide Creek
Litho-structural interpretation to help define target areas
On-ground exploration to refine initial drill targets – drilling currently planned for within six months of acquisition completion.

Mersey Project

Soil sampling and rock chip geochemistry sampling programs to vector mineralisation for drill targeting – focusing on gold prospective areas in western region of the Project
LIDAR survey
Detailed airborne electro-magnetic (EM) survey over entire Project area to assist in identifying massive sulphide targets.



CONTACT US

Andrew Fogg

Chief Executive Officer

+61 7 3229 6606

info@pacificresources.au

James Moses

Investor & Media Relations

+61 420 991 574

james@mandatecorporate.com.au

